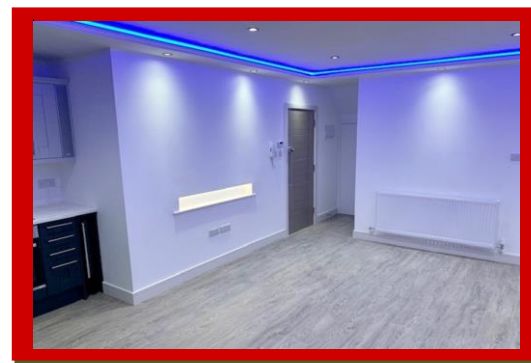
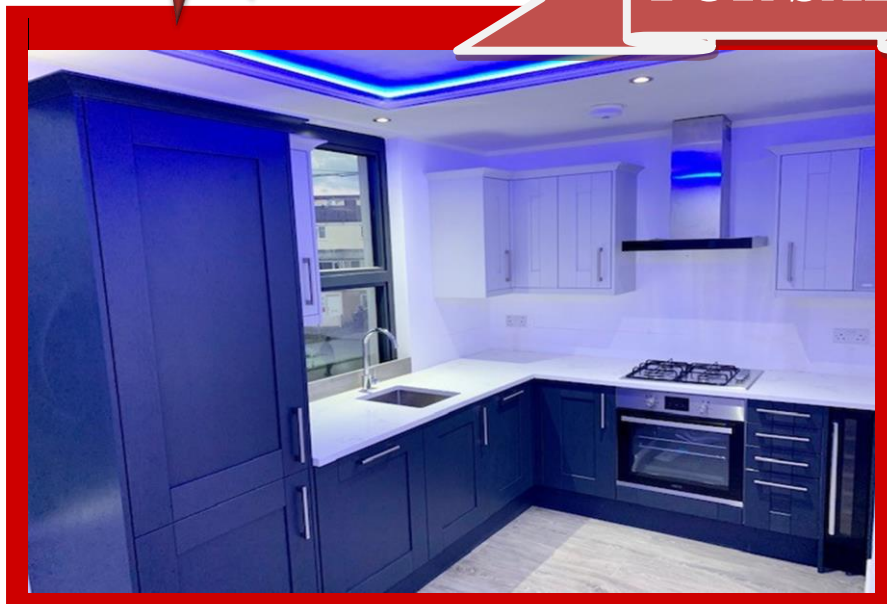




  
**CROWN**  
LETS 4 U

**FOR SALE**



**£350,000 Leasehold**

## **2 Bedroom Flat Derby Road, Croydon, Surrey, CR0**

Crown Lets 4u Estate Agents are proud to present a luxury new build conversation 2 bed flat in the heart of Croydon town centre.

Everything that Croydon has to offer is on your doorstep, excellent location and offers well proportioned, spacious living space. Brilliant shopping centre, cinema, bars, restaurants, night life, you name it!

This property is on the doorstep to all the transport links of buses, trams and trains running regularly to central London and is very close to a large range of amenities as well as the Whitgift and Centrale shopping centres.

Only a stone throw away from West Croydon Railway Station and West Croydon Tram Stop.

**New lease available and no onward chain!**

**Ideal for first time buyers with only 5% deposit!**

From 1 July 2021, you'll get a discount (relief) that means you'll pay less or no tax if both the following apply:

you, and anyone else you're buying with, are first-time buyers  
the purchase price is £500,000 or less

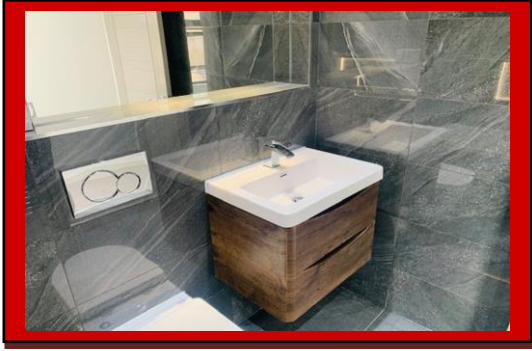
You'll also be eligible for this discount if you bought your first home before 8 July 2020.



**Croydon Office:** Crown Lets 4u, 292 London Road, Croydon, Surrey, CR0 2TG

**Tel:** 020 8684 6677 **Mob:** 07540 874 532 **Fax:** 0872 115 6090 **Email:** info@crownlets4u.co.uk

[www.crownlets4u.co.uk](http://www.crownlets4u.co.uk)



This amazing property comprises a master double bedroom, designer double glazed aluminium grey window with tinted glass, radiator, built in double wardrobe with sliding mirrors and inside LED light. The bedside designer feature wall has a unique modern design with side and boarder LED lights. The second double bedroom is also a generous size with designer double glazed aluminium grey window with tinted glass and a radiator.

This huge open plan lounge has a dropped down double ceiling with LED colour changing lights around the ceiling with remote, an extra LED light wall feature, huge storage cupboard, two large designer double glazed aluminium grey windows with tinted glass, radiator and a boiler cupboard.

The fully fitted luxury kitchen has a small wine fridge, Bluetooth built in speaker, integrated washing machine, integrated dishwasher, gas cooker, electric oven, stainless steel extractor fan and integrated tall fridge/freezer. This designer kitchen has a blue slick style units with a white quartz worktop, kitchen mixture taps and a designer stainless steel kitchen sink.

The luxury bathroom has a huge wall mirror with LED lights, marble effect grey floor and wall tiles, bathtub with above power shower, LED lights inside the bath area, shower glass screen, chrome shower wall mixture taps with shower mixtures and a large shower head, designer hand wash basin unit with two draws, chrome mixture tap, wall mounted low level WC with chrome push buttons on the wall and a chrome towel radiator.

This outstanding bathroom is so exciting, we guarantee that you will be spending more time in this beautiful bathroom than any other part of this flat!

The property further benefits from heat/smoke alarm, telephone entry system, gas central heating, designer double glazed aluminium grey windows with tinted glass, designer doors/handles, huge storage cupboard and wooden flooring throughout. This flat is on the first floor and the communal front entrance is shared with only one flat. The communal front entrance/stairs has emergency lights, automatic designer sensor wall LED lights with stainless steel side hand rails and this continues to the first and second floor.

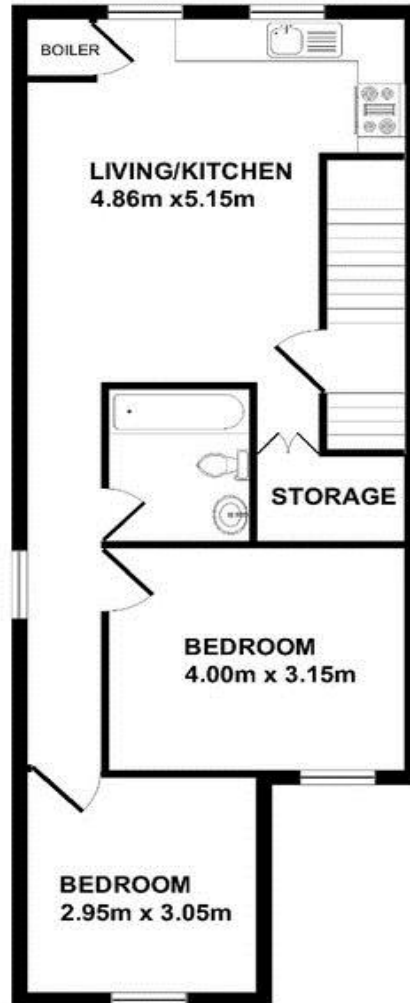
This property is on the doorstep to all the transport links of buses, trams and trains running regularly to central London and is very close to a large range of amenities as well as the Whitgift and Centrale shopping centres.

Only a stone throw away from West Croydon Railway Station and West Croydon Tram Stop.

- **Newly Converted**
- **2 Bed Flat**
- **Double Bedrooms**
- **Huge Open Plan Kitchen/Lounge**
- **Fully Fitted Designer Kitchen**
- **Luxury Designer Bathroom**
- **Gas Central Heating**
- **Double Glazed Windows**
- **Wooden Flooring**
- **Storage Cupboard**
- **Telephone Entry System**
- **New Lease**
- **Leasehold**
- **Sought after location**
- **No Onward Chain**
- **Located In Central Croydon**
- **Excellent Transport Links**

# FLOOR PLANS

**69 DERBY ROAD CROYDON  
CR0 3SF  
FLAT 2**



**FIRST FLOOR**  
Aproximate Area  
61.00 sq.m  
656.60 sq.ft



**Croydon Branch:** 292 London Road, Croydon, Surrey, CR0 2TG

**Tel:** 020 8684 6677 **Mob:** 07540 874 532 **Fax:** 0872 115 6090 **Email:** info@crownlets4u.co.uk

[www.crownlets4u.co.uk](http://www.crownlets4u.co.uk)