



# CROWN

LETS 4 U

**TO LET**



**£1,700 Per Calendar Month**

## **2 Bedroom Apartment Birchwood Close, Morden, SM4**

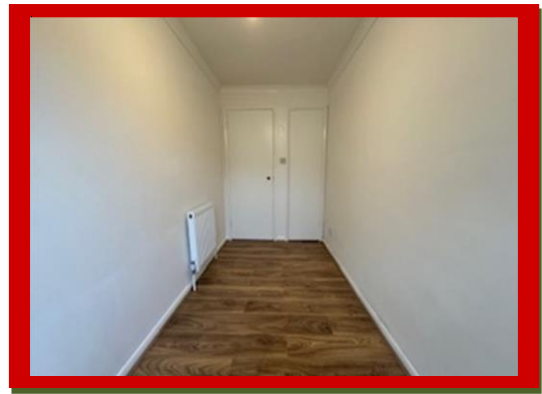
The accommodation comprises of main entrance hall with slim line wall mounted shoe rack, telephone entry, spacious reception room, separate modern fully fitted kitchen with gas cooker, electric oven, washing machine and a fridge/freezer with water dispenser. The master double bedroom has a built-in mirror sliding door wardrobe, the second bedroom is a generous size single with a storage space and a modern bathroom with push button WC, hand wash basin and a bathtub with above power shower. This property is newly refurbished with new double-glazed windows, gas central heating and wood flooring throughout.

Further features to note, allocated parking, security entry phone system and modernised throughout. Located within easy reach of Morden Hall Park and a short bus journey to Wimbledon's vibrant town centre. Only few minutes' walk to Morden Underground Station (Northern Line).

**UNFURNISHED**

**AVAILABLE NOW!**

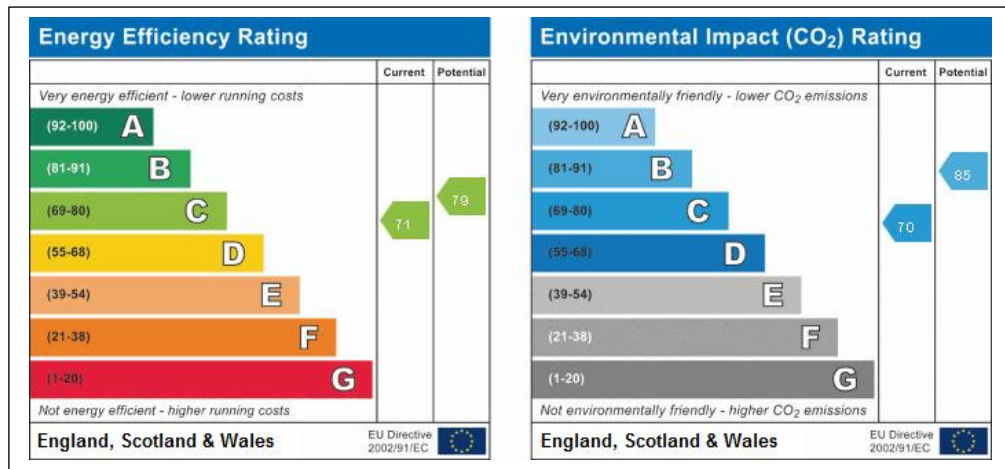
- Two bedrooms
- Newly Refurbished
- Security Entry Phone
- Ground Floor
- Allocated Parking
- Private Development
- New Double Glazed
- Gas Central Heating
- Wood Flooring
- Separate Kitchen
- Spacious Lounge
- Modern Bathroom
- Close to Morden Station
- Close to High Street
- Close to Wimbledon



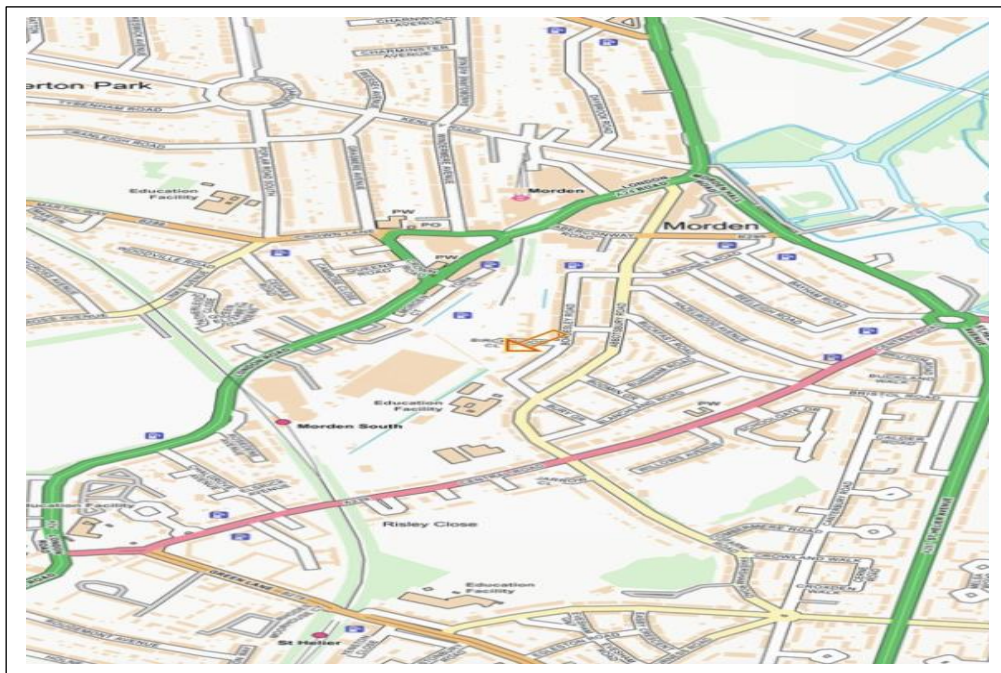




## EPC



## MAP&POSTCODE: SM4 5LA



**Croydon Branch:** 292 London Road, Croydon, Surrey, CR0 2TG

**Tel:** 020 8684 6677 **Tel:** 020 8764 1111 **Fax:** 0872 115 6090 **Email:** info@crowplets4u.co.uk

[www.crowplets4u.co.uk](http://www.crowplets4u.co.uk)